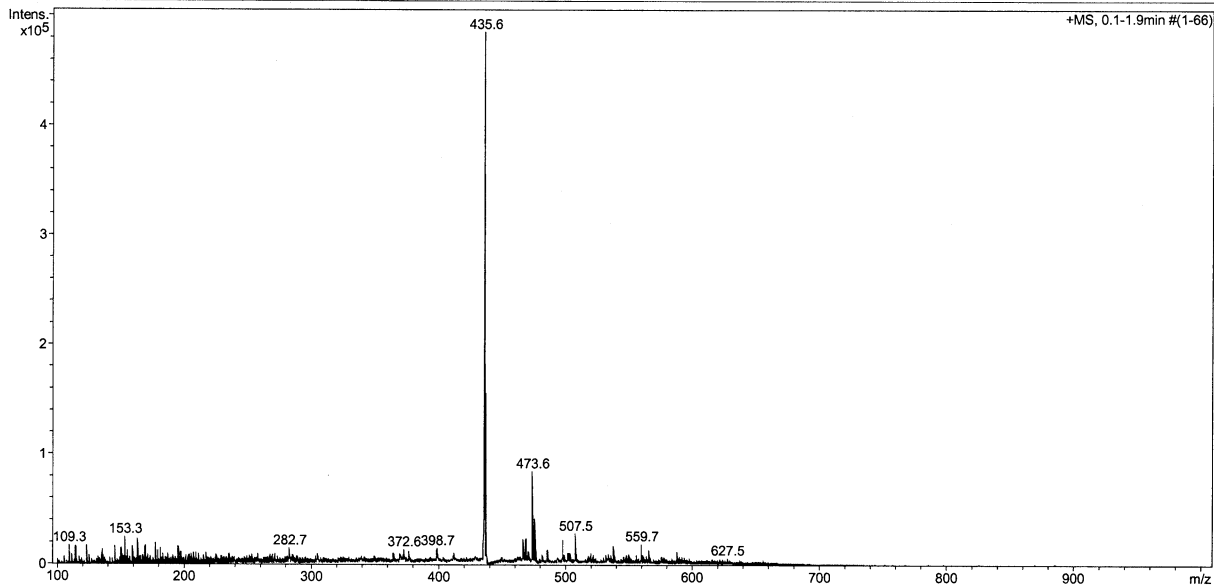


## Appendix 2: Mass Spectrometry Data

### Generic Display Report

<b>Analysis Info</b>		Acquisition Date	02.04.2015 16:53:00
Analysis Name	C:\Users\Selim\Desktop\Data\ESI-IT-MS Data\SERVICE\040215_Sample1-RP_450_150203.d	Operator	UA MS Lab
Method	DEFAULT_MS.M	Instrument	HCTUltra ETD II
Sample Name	Sample 1-RP		
Comment	Concentration: 5 ng/ml in MeOH Target mass: 450 m/z Acquisition time: 2.0 min		



Bruker Compass DataAnalysis 4.0

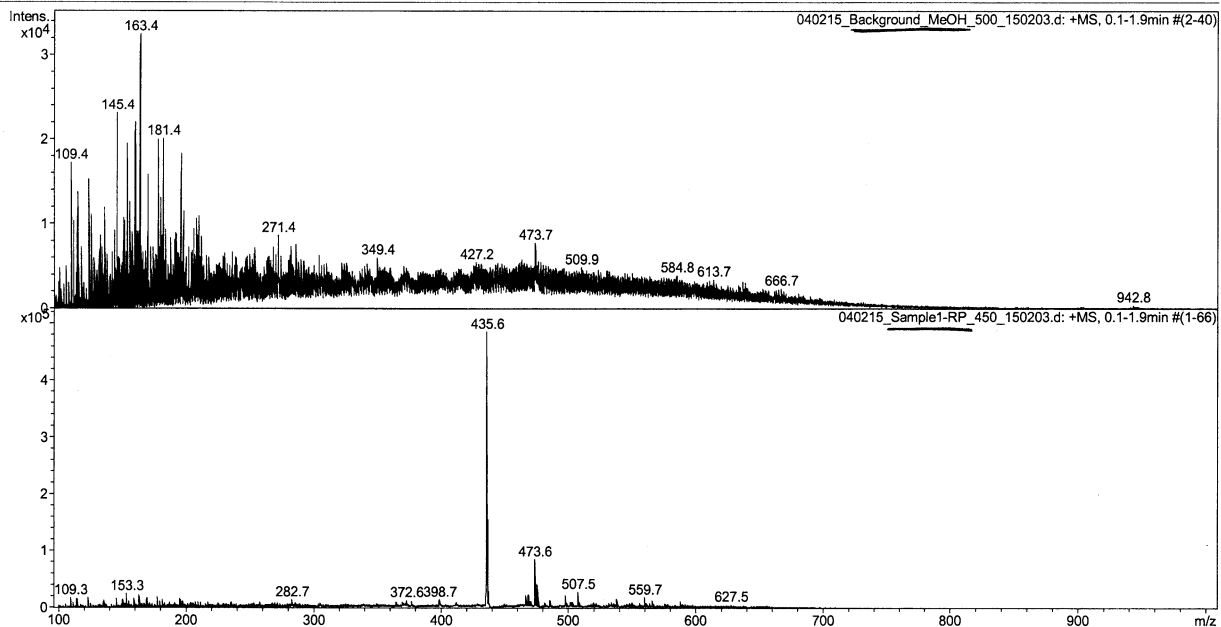
printed: 06.04.2015 10:01:47

Page 1 of 1

**Chart 1: Mass spectrometry data for 3. Theoretical M<sup>+</sup> = 435.2.**

### Generic Display Report

<b>Analysis Info</b>		Acquisition Date	
Analysis Name		Operator	
Method		Instrument	
Sample Name			
Comment			



printed: 06.04.2015 10:01:15

Page 1 of 1

**Chart 2: Mass spectrometry data for background methanol (top) compared to 3 (bottom).**

## Generic Display Report

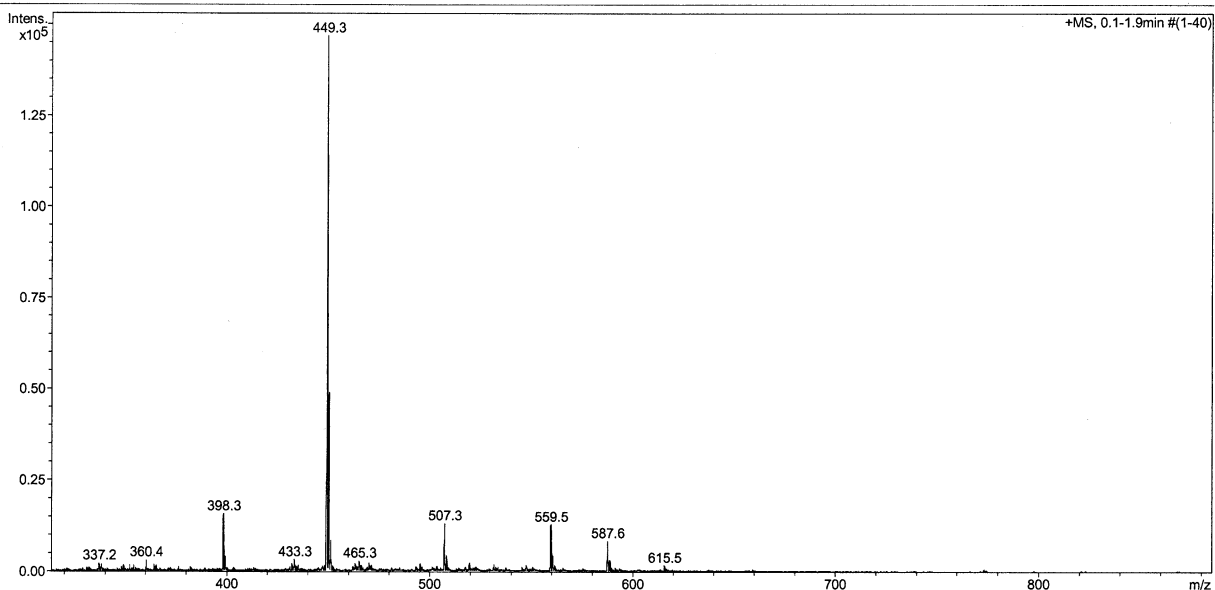
## Analysis Info

Analysis Name C:\Users\Selim\Desktop\Data\ESI-IT-MS Data\Service Samples\_2015\042915\_Sample a\_150293\_500\_trial 1b.d  
Method DEFAULT\_MS.M  
Sample Name Sample a  
Comment Concentration: 5 ug/mL in MeOH  
Target mass: 500 m/z, Max. Accu Time: 3.50 ms  
Acquisition time: 2.0 min

Acquisition Date 29.04.2015 10:36:36

Operator UA MS Lab

Instrument HCTultra ETD II



Bruker Compass DataAnalysis 4.0

printed: 01.05.2015 11:19:47

Page 1 of 1

Chart 3: Mass spectrometry data for 5. Theoretical M<sup>+</sup> = 449.3.

## Generic Display Report

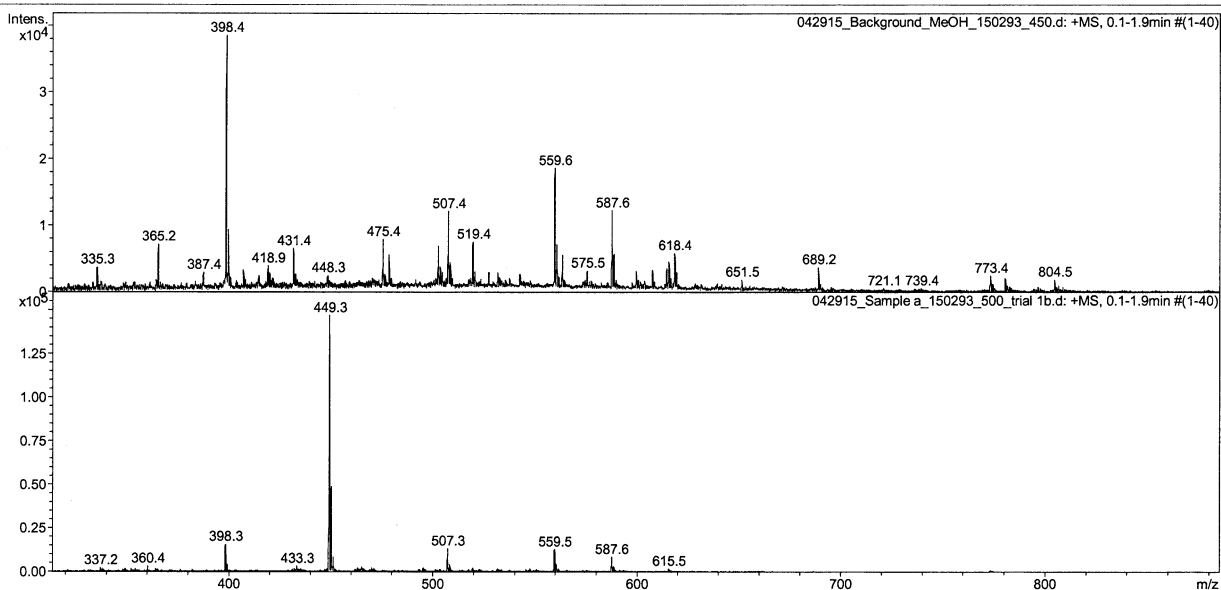
## Analysis Info

Analysis Name C:\Users\Selim\Desktop\Data\ESI-IT-MS Data\Service Samples\_2015\042915\_Sample a\_150293\_500\_trial 1b.d  
Method DEFAULT\_MS.M  
Sample Name Sample a  
Comment Concentration: 5 ug/mL in MeOH  
Target mass: 500 m/z, Max. Accu Time: 3.50 ms  
Acquisition time: 2.0 min

Acquisition Date 29.04.2015 10:36:36

Operator UA MS Lab

Instrument HCTultra ETD II



Bruker Compass DataAnalysis 4.0

printed: 01.05.2015 11:19:34

Page 1 of 1

Chart 4: Mass spectrometry data for background methanol (top) compared to 5 (bottom).